

LAKE CHAMPLAIN - LAKE GEORGE REGIONAL PLANNING BOARD

2006 ANNUAL REPORT



AERIAL PHOTO OF THE FORMER PLATTSBURGH AIRBASE
SOON TO BE HOME TO THE CLINTON COUNTY AIRPORT

Photo Credit: Plattsburgh Airbase Redevelopment Corporation

Sustainable Economic Development That
Strengthens & Preserves Our Communities

LC-LGRP * P.O. BOX 765 * LAKE GEORGE, NY 12845

Ph: 518.668.5773 * Fax: 518.668.5774 * lclgrp@verizon.net * www.lclgrp.org

Layout and Design by Sarah Gebbie-Measeck

2006 MEMBERSHIP

OFFICERS	LCLGRP STAFF	A/GFTC STAFF
Cathy Moses.....Chair Robert Dedrick.....Vice-Chair Louis Tessier.....Treasurer Willy Grimmke.....Secretary	Walter Young.....Director Randy Rath.....GIS Specialist Sarah Gebbie-Measeck.....Env. Planning Ast. Kathie Walaska.....Secretary	Aaron Frankenfeld.....Director Kristina Hong.....Transportation Analyst Monika Bulman.....Admin. Assistant

REGIONAL PLANNING BOARD MEMBERS

<u>Clinton County</u>	<u>Essex County</u>	<u>Hamilton County</u>	<u>Warren County</u>	<u>Washington County</u>
James Langley	Daniel Connell	William Farber	Zandy Gabriels	Mark Galough
Albert Rascoe	Cathy Moses	William Osborne	William Thomas	Joanne Trinkle
Janet Duprey	Robert Dedrick	Robert Edwards	Dan Stec	Willy Grimmke
Samuel Trombley	Fred Buck	Tracy Eldridge	Francis O'Keefe	Phyllis Cooper
Rodney Brown	Noel Merrihew	Beth Hunt	Bill Remington	John LaPointe
Sara Rowden	Michael Diskin	Barry Hutchins	Louis Tessier	

REGIONAL DEVELOPMENT CORP. MEMBERS

Spencer Egglefield.....Director-President	Samuel Trombley.....Director	William Remington.....Director
Nancy Rhodes... Director-Vice-President	Joseph Kelly.....Director	John Heffernan.....Director
Louis Tessier.....Director-Treasurer	Roseanne Murphy...Director	Harry Booth.....Director
Willy Grimmke.....Director-Secretary		Walter Young.....Director

REVOLVING LOAN FUND COMMITTEE

<u>Clinton County</u>	<u>Essex County</u>	<u>Hamilton County</u>	<u>Warren County</u>	<u>Washington County</u>
Samuel Trombley	Spencer Egglefield	John Heffernan	Louis Tessier	Harry Booth
	Joseph Kelly	Nancy Rhodes	Peter Marshall, CPA	Willy Grimmke

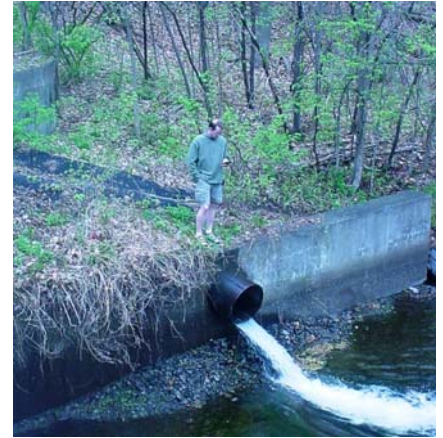
Lake Champlain - Lake George
 Regional Planning Board
 P.O. Box 765
 Lake George, NY 12845

GEOGRAPHIC INFORMATION SYSTEMS

We had another busy year at the Planning Board. Requests for Census data were low this year, but we still kept busy with new projects that focused on GIS and economic development.

A GIS mapping project was finished for the Town of Easton in Washington County. The Town of Easton is in the beginning stages of updating their Master Plan and wanted maps that were originally prepared for them in the early 1970's updated with current data.

The stormwater program for Municipal Separate Storm Sewer System (MS4) communities involved a mapping component this year. Through a grant for all of the participating MS4 communities, the Regional Planning Board and Warren County Soil & Water Conservation District (SWCD) were able to purchase a Global Positioning System (GPS). The SWCD provided an intern to take the GPS out to the MS4 communities and identify all stormwater outfalls (the end of pipes) that enter directly into bodies of water, such as streams, canals and rivers. Using this data a map of all the identified outfalls will now be provided to the MS4 communities. This map will help them identify potential illegal discharges, such as illegal connections to the stormwater systems, that may be coming through the outfalls. Then the community can begin to address and rectify such discharges as required by their stormwater permit.



IDENTIFYING AN OUTFALL
ALONG THE FEEDER CANAL

Another new project is the New York State Energy Research and Development Authority (NYSERDA) Wind Energy project. The objective of this program is to assist local governments in preparation for wind energy. Wind Energy is a sustainable and clean energy source that will help New York State achieve a State agenda item of obtaining 25% of all its energy consumed from renewable resources. To learn more about NYSERDA and the program, please visit our website and click on the Wind Energy link.

We have also begun a revision of the Comprehensive Economic Development Strategy (CEDS) and it is nearly complete. All of the Census and economic data have been updated as well as recent employment changes and emerging trends.

As of January 2007 Randy Rath, our GIS Specialist will be working fulltime at the Lake George Association. We have enjoyed Randy's work here at the Regional Planning Board for several years and he will certainly be missed.

American Community Survey

As noted in previous newsletters and as you may have already seen, the American Community Survey (ACS) has been implemented by the US Census Bureau. The ACS is a new method of collecting Census data so that we don't have to wait every ten years for new Census data. It will be collected annually and reported either annually or in three (3) or five (5) year averages depending on your location and size of population.

There is a new aspect of the data that will be released as well. You will see a +/- Margin of Error (MOE) number after each count. For example, the ACS is reporting for 2005 that Warren County has a Male population of 31,675 +/-454 and a Female population of 32,601 +/-454. The +/- MOE numbers are showing what amounts to be the confidence interval (CI) of 90 percent. The CI roughly means that the Census Bureau is reporting with 90 percent certainty that the true number falls between the upper and lower bounds of that reported number. A more correct wording for Warren County should read as, "We are 90% certain that the male population is between 31,221 and 32,129 and the female population is between 32,147 and 33,055." In essence, there have always been confidence intervals used in the Census, but it is only now that they are going to report them. For more information on the ACS or the US Census, please visit www.census.gov.

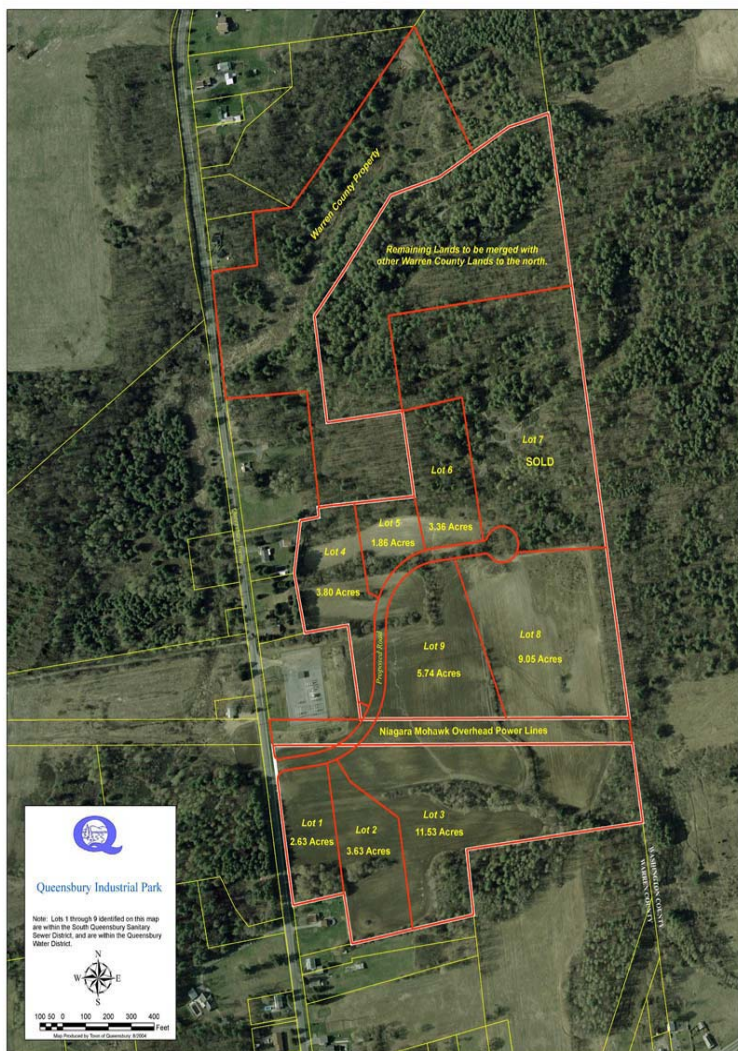
ECONOMIC DEVELOPMENT

EDA Authorizes Funding for Queensbury Industrial Park

The US Department of Commerce/Economic Development Administration (EDA) has given preliminary approval to a \$529,000 Public Works Grant request to support the development of a 56 acre industrial park located on the east side of Queensbury Avenue. The Queensbury Industrial Park consists of nine New York State certified, shovel ready lots. This \$529,000 matching grant will allow for construction of a 1,765 ft public roadway and associated utilities to serve each individual lot.

The New York Army National Guard has already signed a purchase contract as the Park's first tenant. They will build a new 52,000 square foot, \$9.7 million Readiness Center, on 14 acres in 2007. A second phase 17,000 square foot, \$5.9 million vehicle maintenance facility will be added to the site in 2010.

This EDA grant is especially important as New York State seeks to bring technology, research and development, nanotechnology and biotechnology companies into the upstate region. The recent announcement by Advanced Micro Devices (AMD) to locate a new chip manufacturing facility just 30 minutes south of Queensbury adds urgency to the need to create viable sites to build additional technology investment and supporting service providers in the upstate New York region.



AERIAL VIEW OF THE QUEENSBURY INDUSTRIAL PARK

OPERATING FUND

<u>REVENUES</u>	<u>TOTALS</u>
Grants	356,084
Overhead Reimbursement	2,842
Other Income	61,495
Interest Income	142
Administrative Income	<u>15,677</u>
TOTAL REVENUES	\$436,240 *

EXPENDITURES

Payroll Expenditures:	
Salaries and wages	245,498
Payroll Taxes & Fringe Benefits	<u>91,880</u>
Total Payroll Expenditures	\$337,378

Operating Expenditures:

Geographic Info. System	22,233
Advertising	1,708
Insurance	3,503
Dues & Meetings	5,570
Maintenance Agreements	2,427
Equipment	2,222
Postage	4,242
Printing & Supplies	9,260
Professional Fees	31,792
Rent	17,997
Telephone & Internet	3,932
Travel	<u>6,451</u>
Total Operating Expenditures	\$111,337

TOTAL EXPENDITURES \$448,715

*Does not include receivable grant revenue reimbursements for the 4th quarter of Calendar Year 2005

ECONOMIC DEVELOPMENT

Congratulations to Our 2006 Loan Recipients

Every year the Revolving Loan Fund Committee reviews dozens of applications for loans. Each applicant is eager to create or improve an existing business that will not only generate new employment opportunities, but will also give back to their community. This year nearly \$778,000 in new loans were issued to the businesses listed below.

Season's Bath, Bubbles and Beads	Clinton County
Cloverland Farms	Essex County
Merrill Magee House	Warren County
Gerald Hill Plumbing and Heating	Warren County
Jays Monitor Heating	Warren County
Hitching Post Restaurant	Warren County
Viele's Automotive Service	Warren County



THE HITCHING POST RESTAURANT IN LAKE LUZERNE

ADIRONDACK/GLENS FALLS TRANSPORTATION COUNCIL

Regional Access Management Study

Resource Systems Group, Inc., and the Saratoga Associates were chosen to conduct the Regional Access Management Study. In addition to several sessions with the study advisory committee, the team held specific outreach meetings with the Town of Moreau Planning Board and the Adirondack Regional Chamber of Commerce. Field inventories of access management issues along four demonstration corridors (Route 9 in Queensbury, Quaker Road in Queensbury, Route 197 in Moreau and Dix Avenue in Kingsbury) have been developed and traffic and accident histories along those corridors have also been tabulated. In addition to the demonstration corridors, work was advanced on the Access Management Guidebook, a planning tool that can be used by our area municipalities to maximize coordination of land use development with safe and efficient transportation. The Guidebook will include sample regulations and access permitting, specific considerations for transit and non-motorized travelers, and local and national case studies.

Aviation Road Corridor Study

The Aviation Road Corridor Study progressed slowly throughout 2006. Wilbur Smith Associates and The Chazen Companies have now resumed work on the study after efforts to coordinate the study as closely as possible with the ongoing Master Site Plan update for the Queensbury Unified Free School District resulted in delays during the latter half of 2006. A well-attended public work session was held in July that generated a considerable amount of valuable feedback. Related documents are available on the A/GFTC website (www.agftc.org).

2030 Long Range Plan

A/GFTC staff conducted extensive public outreach efforts as part of the process to update the Regional Long Range Transportation Plan. A question and answer session was held at the Greater Glens Falls Senior Center. Four informational kiosks that included survey stations and brochures were placed within Aviation Mall and other survey stations were located at municipal offices. Advertising was purchased on two area radio stations and signs were displayed on Greater Glens Falls Transit vehicles alerting the public to the ongoing survey effort. Two meetings were conducted with staff from *The Post Star* and an online article with a direct link to an electronic version of the survey was published. Over 200 completed surveys were returned and the results will be incorporated into the 2030 Long Range Plan.

WATER QUALITY

Working closely with County Soil & Water Conservation Districts (SWCD) has always been a key to implementing water quality programs on a local level. This is even more true as the Warren County SWCD and the Regional Planning Board work together to implement a regional grant on behalf of the eight regulated Municipal Separate Storm Sewer System (MS4) communities in Warren and Washington Counties. In 2008 the NYS Department of Environmental Conservation will be checking to ensure each MS4 has obtained compliance in their permit. As that deadline nears, it becomes more and more important to assist the MS4s with implementing their stormwater permits.

Another way the Regional Planning Board works with County SWCDs is through the Champlain Watershed Improvement Coalition of New York, Inc (CWICNY - pronounced "quick-knee"). Through regional cooperation with the Lake George Watershed Conference and the NYS Department of Environmental Conservation, CWICNY was able to host the North Country Regional Stormwater Tradeshow & Conference on October 19th. Approximately 200 people attended this event and made it a huge success. Plans are already underway to make this an annual occurrence.

Through CWICNY, the Regional Planning Board is also able to organize several onsite wastewater training events, including two separate three day trainings for local code enforcement officials and private companies in the wastewater profession.



2006 NORTH COUNTRY STORMWATER TRADESHOW

The first training will take place Lake Placid in April 2007 and the second will be in Glens Falls in October 2007. Through education local officials can begin to better equip themselves to adequately enforce wastewater regulations and protect their community's water quality and public health.



2006
ADIRONDACK
WATERFEST

The 2006 Adirondack Waterfest was the sunniest one yet! Once again, the Greater Adirondack RC&D Council and the Regional Planning Board worked with local organizations, such as the Warren County SWCD and the Town of Queensbury to host another wonderful Waterfest. Live music by Brian Chevalier and Rich Ortiz filled the air, while people watched demonstrations from Ducks Unlimited, and went on guided nature tours. Several other activities, such as door prizes, clowns, kids games and a bouncy tent were more than enough to draw people into Queensbury's Gurney Lane Recreation Area for a day of fun and water quality education. Next year's Adirondack Waterfest will be held at Ticonderoga's Bicentennial Park on Saturday, July 14th.



From the top: Hornbeck Boats display their products, UpYonda's interactive exhibit and Ronny Raindrop makes an appearance.

For more information about upcoming events or possible water quality projects please contact Sarah Gebbie-Measeck at (518) 668-5773 or sgebbie_rpb@verizon.net